

EXISTING ELEVATED WATER STORAGE TANK (150,000 GAL.) BASE ELEVATION - 736 FT.

EXISTING ELEVATED WATER STORAGE TANK (100,000 GAL.) BASE ELEVATION - 736 FT.

2 mile

Start

Water

VETERANS MEMORIAL PARK

GENOA ATHLETIC FIELD

SR. HIGH SCHOOL

PUBLIC WORKS DEPARTMENT

POST OFFICE ADMIN. BLDG.

TOWN HALL

SR 163 FOURTH ST

JACKER'S ACRES

INDUSTRIAL PARKWAY

CORPORATION LINE

CORPORATION LINE

CORPORATION LINE

CORPORATION LINE

RITE AID

NAPA

GENOA MINI-MART

WOODVILLE ROAD

17TH ST

16TH ST

15TH ST

14TH ST

13TH ST

12TH ST

11TH ST

10TH ST

9TH ST

8TH ST

7TH ST

6TH ST

5TH ST

4TH ST

3RD ST

2ND ST

WEST ST

WEST ST

SUPERIOR ST

BUCKEYE ST

MAIN ST

BUCKEYE ST

CHERRY ST

WILSON ST

WILSON ST

WILSON ST

N. RAILROAD ST.

S. RAILROAD ST.

WINDSOR CT
EDINBURGH CT
CASTLE ROVE

WALLINGTON CT

CENTRAL ST

WILSON ST

WASHINGTON ST

MAIN ST

WEST ST

SUPERIOR ST

BUCKEYE ST

CHERRY ST

WILSON ST

WILSON ST

JR. HIGH SCHOOL

3RD ST

4TH ST

5TH ST

6TH ST

7TH ST

8TH ST

9TH ST

10TH ST

11TH ST

12TH ST

13TH ST

14TH ST

15TH ST

16TH ST

17TH ST

18TH ST

19TH ST

20TH ST

21ST ST

22ND ST

23RD ST

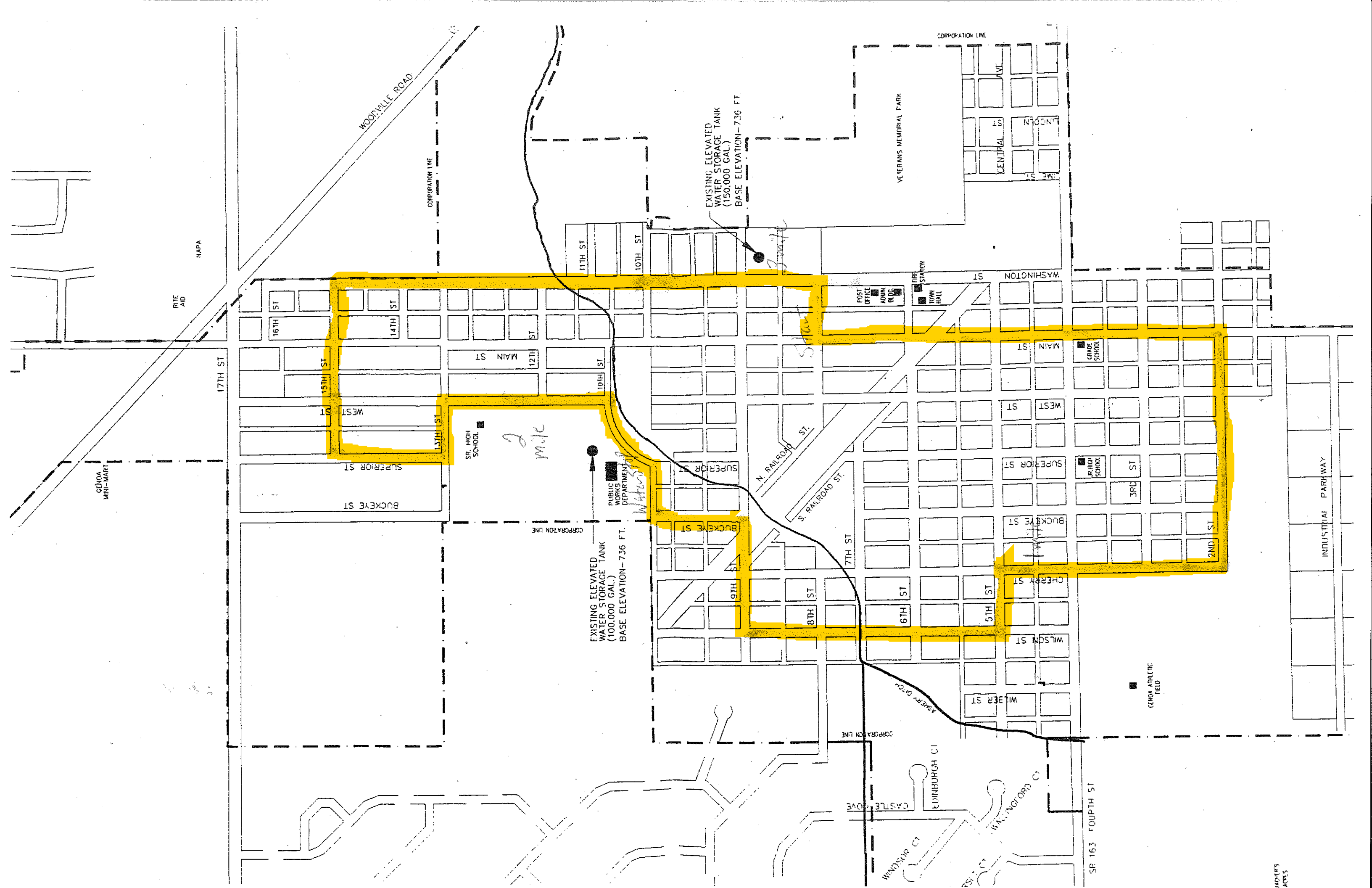
24TH ST

25TH ST

26TH ST

27TH ST

28TH ST



EXISTING ELEVATED WATER STORAGE TANK (150,000 GAL.) BASE ELEVATION-736 FT.

EXISTING ELEVATED WATER STORAGE TANK (100,000 GAL.) BASE ELEVATION-736 FT.

2 mile

Station

RITE AID

NAPA

GENOVA MINI-MART

17TH ST

16TH ST

15TH ST

14TH ST

MAIN ST

12TH ST

10TH ST

WEST ST

SUPERIOR ST

BUCKEYE ST

SR. HIGH SCHOOL

PUBLIC WORKS DEPARTMENT

EXISTING ELEVATED WATER STORAGE TANK (100,000 GAL.) BASE ELEVATION-736 FT.

SUPERIOR ST

BUCKEYE ST

9TH ST

8TH ST

7TH ST

6TH ST

5TH ST

CHERRY ST

WILSON ST

WILBER ST

CASTLE GROVE

EDINBURGH CT

WINDSOR CT

SR 163 FOURTH ST

TEACHERS ACRES

INDUSTRIAL PARKWAY

GENOVA ATHLETIC FIELD

VETERANS MEMORIAL PARK

CENTRAL ST

WINDSON ST

FIRE STATION

POST OFFICE

ADMIN BLDG

TOWN HALL

WASHINGTON ST

GRACE SCHOOL

JR. HIGH SCHOOL

3RD ST

2ND ST

CORPORATION LINE

CORPORATION LINE

CORPORATION LINE

CORPORATION LINE

WOODVILLE ROAD